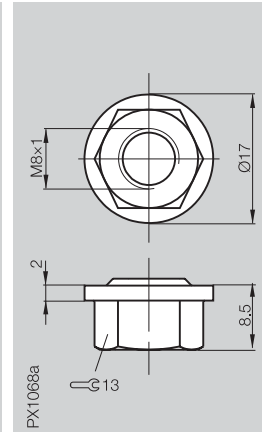
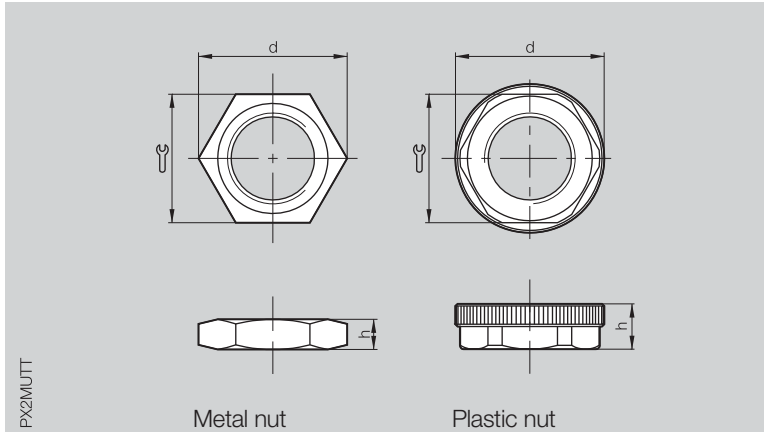
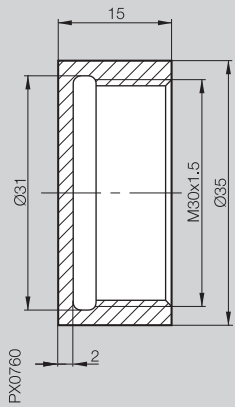


Cover nut

Nuts

Seal nut



BES 30-SM-2

Ordering code = Part No.

BES 08-DM-1

This cover nut is threaded on to a M30x1.5 housing. It is made of POM and can be used for high mechanical stress applications.

Metal nuts	Part no.	Material	d	Wrench	h
M8x1	500557	Steel galvanized	15	13	4
M12x1	500462	Ms nickel plated	20	17	4
M18x1	500152	Ms nickel plated	28	24	4
M30x1.5	500252	Ms nickel plated	42	36	5
Stainless steel nuts					
M5x0.5	605313	1.4305	8.9	7	2.7
M12x1	636981	1.4305	20	17	4
M18x1	636982	1.4301	28	24	4
M30x1.5	636983	1.4401	42	36	5
Plastic nuts					
M12x1	507936	PA 6.6	19.7	17	6
M18x1	606841	PA 6.6	28	24	8
M30x1.5	610292	PA 6.6	40	36	8

Please note!
The nominal switching distance of proximity switches is reduced by 2 mm when the cover nut is installed.

This is used to seal pressure rated proximity switches. It seals against both liquids and gases. For pressure rated M8 sensors up to max. **100 bar**.

Please note!
Can be removed and tightened again up to five times.

Lockwasher for M5 sensors: Part No. 710256
 Lockwasher for M8 sensors: Part No. 500558
 Lockwasher for M12 sensors: Part No. 500552
 Lockwasher for M18 sensors: Part No. 117684

